

Glassforce 1208 Spider Fittings



Product Features

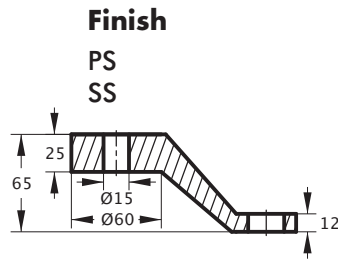
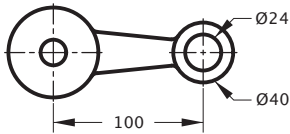
- A wide range of fittings are available from standard spider fittings through to European designed Sadev designer fittings.
- Fixing detail can be tailored for individual projects including side fixed, bottom fixed or top mounted fittings to meet the requirements of small canopies through to complex glass walls.
- Manufactured from 316 stainless to maximise the products life and appearance and available in polished or satin finishes.
- Swivels are available for toughened, laminated, or double glazed units including flush fitting and surface mounted fixing options.
- Custom design and fabrication services are available for specific projects.



Glassforce 1208 Spider Fittings

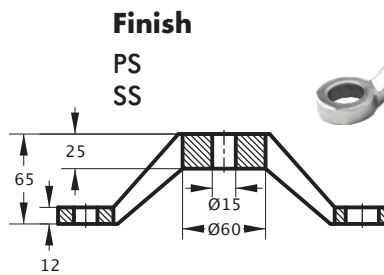
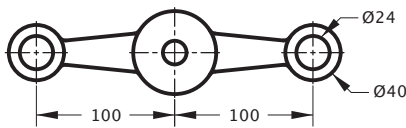
Single Arm Spider 90°

| Product Code | Description |
|--------------|--------------------------|
| SP1PS | Single Arm 316 Stainless |
| SP1SS | Single Arm 316 Stainless |



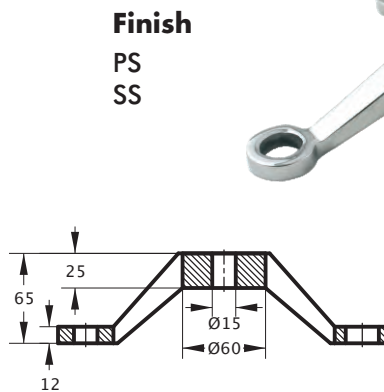
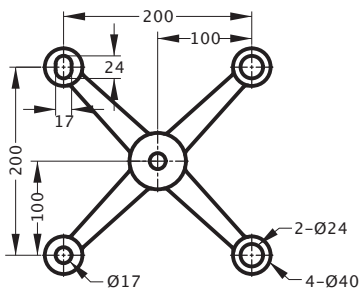
2 Way Spider 180°

| Product Code | Description |
|--------------|--------------------------|
| SP2PS | Double Arm 316 Stainless |
| SP2SS | Double Arm 316 Stainless |



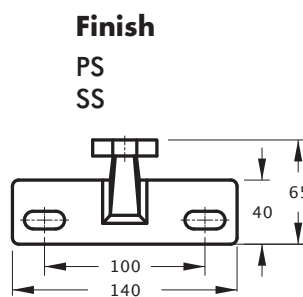
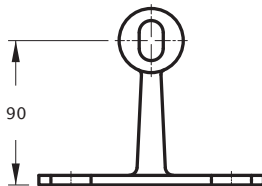
4 Way Spider 45°

| Product Code | Description |
|--------------|------------------------|
| SP4PS | Quad Arm 316 Stainless |
| SP4SS | Quad Arm 316 Stainless |



Side Mounted Single Spider

| Product Code | Description |
|--------------|---------------------|
| SP20PS | Side Mounted Single |
| SP20SS | Side Mounted Single |



Adjustable Swivel

| Product Code | Description |
|--------------|----------------------------|
| SP5PS | Adjustable Swivel Complete |
| SP5SS | Adjustable Swivel Complete |

