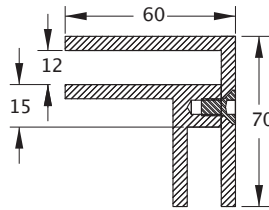
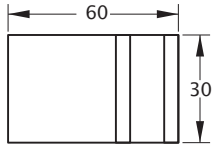


Glassforce 140 Balustrade Brackets & Clamps

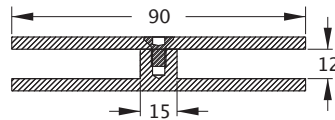
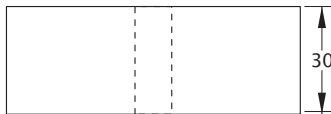
Balustrading Support Bracket, 90° (no holes required)

Product Code	Description	Finish
B1PS	Support Bracket 90°, 12mm Glass	PS
B1SS	Support Bracket 90°, 12mm Glass	SS



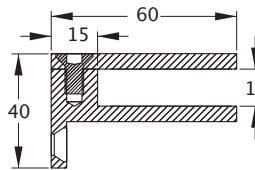
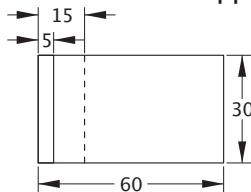
Balustrading Support Bracket, 180° (no holes required)

Product Code	Description	Finish
B2PS	Support Bracket 180°, 12mm Glass	PS
B2SS	Support Bracket 180°, 12mm Glass	SS



Balustrading Support Bracket, Wall End (no holes required)

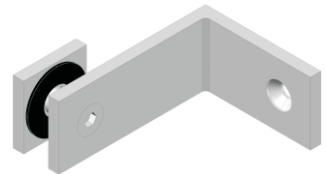
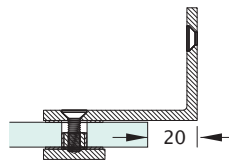
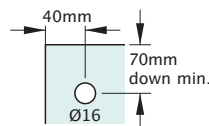
Product Code	Description	Finish
B3PS	Support Bracket, Wall mount, 12mm Glass	PS
B3SS	Support Bracket, Wall mount, 12mm Glass	SS



Balustrading Support Bracket, Wall to Glass

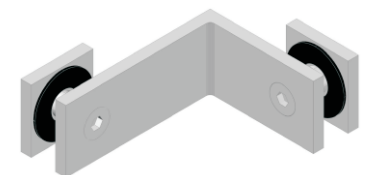
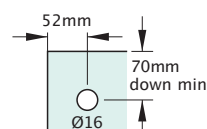
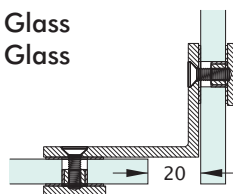
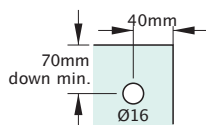
Product Code	Description	Finish
B7PS	Wall to Glass	PS
B7SS	Wall to Glass	SS

Suits up to 15mm glass



Balustrading Support Bracket, Glass to Glass 90°

Product Code	Description	Finish
B6PS	Glass to Glass	PS
B6SS	Glass to Glass	SS



Suits up to 15mm glass,
Same hole dimension on both panels



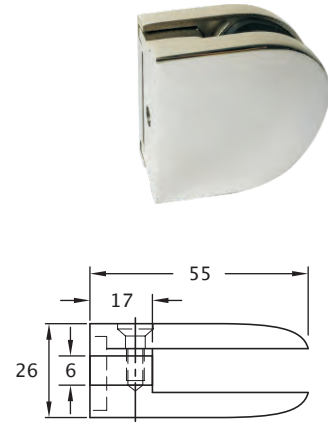
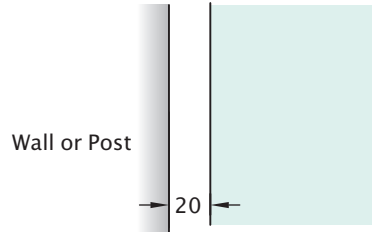
Glassforce 140 Balustrade Brackets & Clamps

Round Clamp

Product Code	Description	Finish
NVC2PS	Round design, Square Post	PS
NVC2SS	Round design, Square Post	SS

Note

- 8mm - 12mm Glass
- 316 Stainless

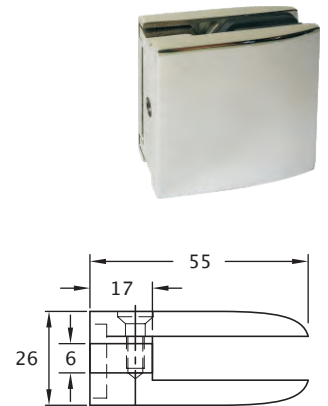
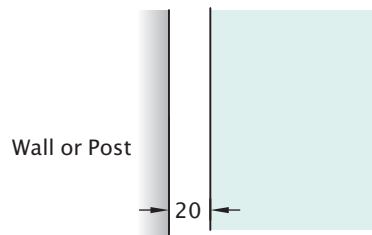


Square Clamp

Product Code	Description	Finish
NVC4PS	Square design, Square Post	PS
NVC4SS	Square design, Square Post	SS

Note

- 8mm - 12mm Glass
- 316 Stainless



Adaptor Plate

Product Code	Description	Finish
NVCRPS	Round Post Adaptor Plate	PS
NVCRSS	Round Post Adaptor Plate	SS

Note

- Plate for use with Clamps for fixing to round post

