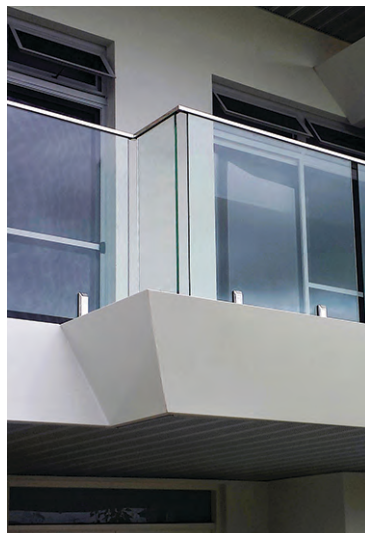


Glassforce 1450 Handrail System



Product Features

- . A contemporary, square handrail with a slim profile for minimal visual intrusion.
- . Suitable for frameless glass installations with no holes required in the glass which means this handrail can be simply fitted to both new and existing installations.
- . Complies with AS/NZS 1170.1.
- . The Cuboid Box Handrail provides support in case of glass breakage and protects the edge of the glass from accidental damage.
- . Manufactured in a choice of Aluminium or 316 grade Stainless Steel.
- . Suits 12mm to 15mm toughened glass with a special glazing rubber provided.
- . End Caps, Wall Brackets and Joiners available.
- . Swivel Joints with either horizontal or vertical adjustment, eliminate a need for welding in most situations.
- . Can accept LED's for special lighting effects.

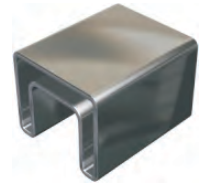
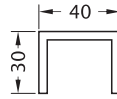


Glassforce 1450 Handrail System

Handrail Section

Product Code	Description	Finish
HR100PS	Stainless 316 (5.8m length)	PS
HR100SS	Stainless 316 (5.8m length)	SS
HR101AL	Alu Mill Finish	MILL

Note: Add the applicable glazing rubber from accessories below.

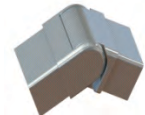
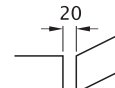


Joiners

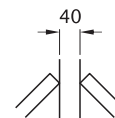
Product Code	Description	Finish
HR102PS	Stainless Joiner 180°	PS
HR102SS	Stainless Joiner 180°	SS
HR102AL	Alu Joiner 180°	MILL
HR109PS	Stainless Joiner 90°	PS
HR109SS	Stainless Joiner 90°	SS
HR109AL	Alu Joiner 90°	MILL

Note: Custom angles available on application

HR106PS	Swivel Joint Vertical Adj	PS
HR106SS	Swivel Joint Vertical Adj	SS



HR110PS	Swivel Joint Horizontal Adj	PS
HR110SS	Swivel Joint Horizontal Adj	SS



End Caps

Product Code	Description	Finish
HR105PS	Stainless End Cap	PS
HR105SS	Stainless End Cap	SS
HR105AL	Aluminium End Cap	MILL
HR103PS	Stainless Wall Bracket FF	PS
HR103SS	Stainless Wall Bracket FF	SS
HR104PS	Stainless Wall Bracket CF	PS
HR104SS	Stainless Wall Bracket CF	SS



Accessories

Product Code	Description
HR107-12	Glazing Rubber 12mm BLK
HR107-15	Glazing Rubber 15mm BLK Tube
HR108	Lock Handrail Glue 50ml
HRT	Steel Template used for hole fixing



Note: Suitable to accept LED Lights

Fixing Options

