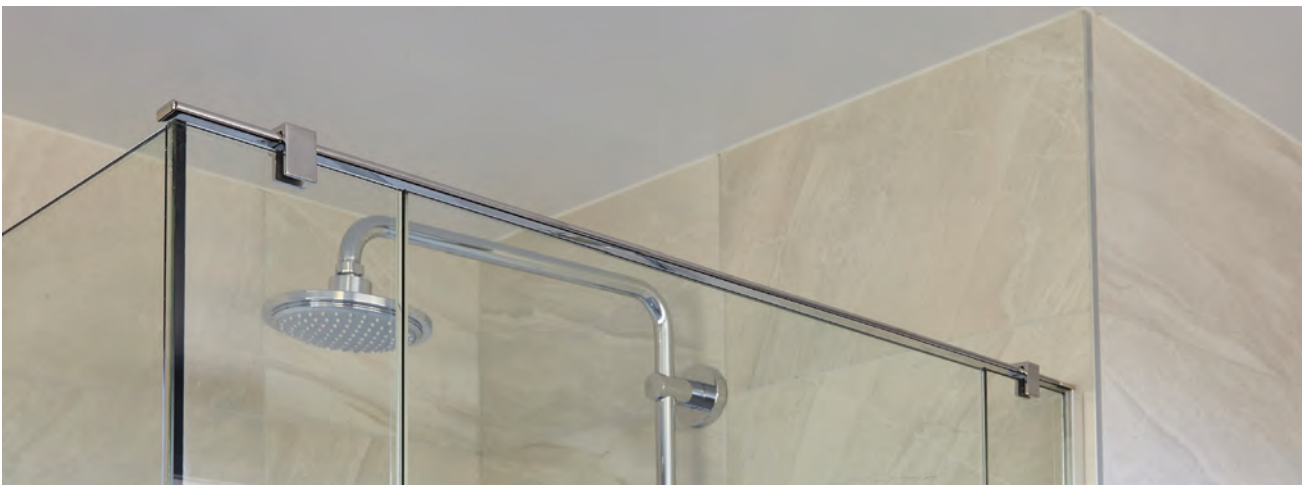


Glassforce Shower Braces, Headers & Overpanels



Product Features

- A stainless HEADER BAR is an alternative to using a glass overpanel for bracing glass shower panels.
- Finishes available in Polished or Satin Stainless, and Black Chrome.
- A choice of Round, Square or Offset Clamps for affixing glass and rail.
- 30mm x 10mm stainless rail in lengths of 1000mm or 1200mm.
- Header Bars can be cut-to-size on site.
- End Caps provide a quality finish to the Header Bar where required.
- The Rail will immediately support the shower panels, enabling an easier installation and making it possible to complete an install within the one visit.



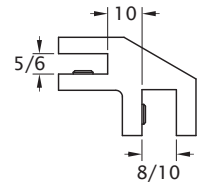
Glassforce Shower Braces, Headers & Overpanels

Overpanel Fittings

Product Code	Description
NVPF2CP	Square Overpanel Fitting
NVPF2SC	Square Overpanel Fitting
NVPF2BC	Square Overpanel Fitting

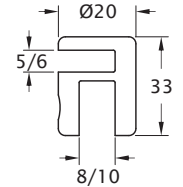
Finish

CP
SC
BC



OPF1PS	Round Design Overpanel Fitting
OPF1SC	Round Design Overpanel Fitting

PS
SC



Note:

- 5/6mm and 8/10mm glass

Shower Braces

Product Code	Description	Finish
BR10PS	Glass to Rod Brace	PS
BR11PS	Wall to Rod Brace	PS
BR13PS	Glass to Rod Brace (swivel)	PS



BR10

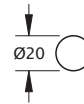


BR11



BR13

BR500PS	Shower Brace Rod	PS
BR1200PS	Shower Brace Rod	PS

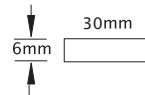


Note

- Braces are angle adjustable. Rod can be cut-to-size on site.

Header Bars

Product Code	Description	Finish
HB2PS	Header Bar Clamp	PS
HB2BC	Header Bar Clamp	BC
HB1000PS	Flat Bar 30x6, 1000mm length	PS
HB1200PS	Flat Bar 30x6, 1200mm length	PS
HB1200BC	Flat Bar 30x6, 1200mm length	BC
HB1PS	End Cap	PS
HB1BC	End Cap	BC



Note

- Bar can be cut-to size on site.

